



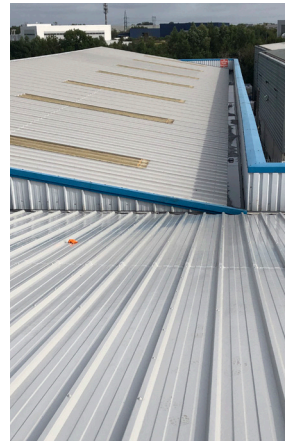
0	Origination	Mar 2021
3	Revision	Feb 2025

Complete profiled metal roof Refurbishment

Designed to reinstate watertight seals, cut edge & weather-side protection to structurally sound profiled metal roof sheets.

What's included

DriSilane® ReCovery includes sheet cut edge treatment plus targeted reinstatement of roof seals and fixings, followed by overall a one coat application of DriSilane® Elite, a hybrid polymer roof coating with a 25 year performance warranty.

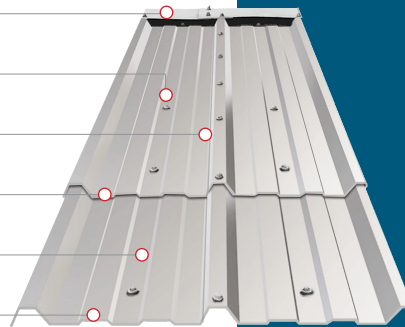


What's not included

Addressing water ingress due to, or arising from:

- Condensation or building design.
- Any roof detail not listed below e.g. penetrations, soakers or vents unless specified.

Detail	Cut Edge	Seal	Coating
Flashing:	●	●	
Fixings:		●	
Side Lap:		●	
End Lap:	●	●	
Roof Sheet:			●
Sheet End:	●		



ReCovery benefits

- Full roof repaint
- Seals reinstated to key roof components
- Full Cut Edge Corrosion treatment
- Supplied for professional use to skilled and experienced applicators in the UK and EU.



DriSilane® Elite Roof Coating

An advanced hybrid polymer coating that combines the high elasticity of silicone and mechanical strength of polyurethane to give continuous flexibility, adhesion, and durability.

Key Features & Benefits

- Surface moisture tolerant one coat application.
- Excellent long term adhesion & corrosion control
- UV resistant and temperature stable.
- Resilient to bird damage, dirt pick-up & staining.
- 25 year performance warranty

Manufactured and tested to accredited quality, environmental & fire standards:

- ISO 9001: 2015 Quality Management
- ISO 14001: 2015 Environmental Standard
- ISO 45001: 2015 H&S Management

External Fire Exposure

- BS 476: Part 3,
- EN 13501-5: 2016 B_{ROOF}(t4)

www.drilsilane.com
 sales@drilsilane.com
 +44 (0) 7464 202270



PRODUCT DATA

DriSilane® Prime: 2-part moisture tolerant epoxy Primer

Colour:	Dark Grey	Curing:	Catalyst
Application:	Brush, Roller	Vol Solids:	64%
Min/Max WFT:	100 /188 µm	Min/Max DFT:	64 /120 µm
m ² (Max):	6 m ² / Lt **	lm (Max):	100 lm / Lt **
Air Temp. °c	Min. +5°C (and rising)	Max.	+35°C
Pot Life:	8 hrs *	Drying Time:	8 hrs *
Clean up:	Xylene	Availability:	1Lt, 2.5 Lt Kit
Instructions: Fully add (Activator) to (Base) and mix thoroughly before use. Do not make up part mix nor add thinner. Discard when mix thickens as pot life is reached. Overcoat within 7 days.			

DriSilane® RS: 1-part moisture tolerant joint Sealant

Colour:	Grey	Curing:	Moisture
Elongation:	340%	Mov Accom.	± 50%
Air Temp °c	Min. +5°C (and rising)	Max.	+35°C
Tooling Time:	30 min *	Tensile Strength:	2.6 N/mm ²
Full Cure:	7-14 Days*	Availability:	600 ml Foil

DriSilane® Flex: 1-part moisture tolerant sealer coat

Colour:	Various	Curing:	Moisture
Application:	Brush, Roller	Volume Solids:	90% (±2%)
Min. WFT:	300 µm	Min. DFT:	270 µm
Coverage Lm (75 mm band width)	30 lm / Lt **		
Air Temp °c	Min. +5°C (and rising)	Max.	+35°C
Tack Free:	2 - 4 Hrs *	Full Cure:	7 Days *
Clean up:	Xylene	Availability:	2.5 Lt
Instructions: Always stir thoroughly before use. Do not thin.			

DriSilane® Elite: 1-part Moisture Tolerant Coating

Colour:	Various	Curing:	Moisture
Apply:	Spray, Brush, Roller	Vol. Solids:	84% (±2%)
Min. WFT:	300 µm	Min. DFT:	250 µm
Max. Coverage (Inc. Profile):	60 m ² / Tin **	Tin Size:	18 Lt
Thinner:	Xylene	Line Clean:	Xylene
Air Temp °c	Min. +5°C (and rising)	Max.	+35°C
Tack Free:	2 - 4 Hrs *	Full Cure:	7 Days *
Instructions: Always stir thoroughly before use.			

* Cure dependent on temperature and ambient conditions

** Coverage dependent on substrate texture & porosity, and application method & technique.

Product Delivery & Storage

Materials shall be delivered in the manufacturer's original, tightly sealed containers and unopened packages, clearly labelled with the supplier's name, product identification, safety information, and batch numbers. Store containers tightly closed, in a cool, well ventilated, frost free area.

SPECIFICATION

This guideline specification is given in good faith, without prejudice or liability and may not be suitable in all circumstances. DriSilane® products are for professional use only. It is the users' responsibility to ensure that the steps outlined in this specification have been fulfilled and to have satisfied themselves of its suitability in meeting the exact project requirements.

Preparation (Substrate, Flashings & Fixings)

Prepared surfaces must be structurally sound and free from dirt, mould, loose and flaking coatings, moss, algae, oil, grease, ice and frost. Remove all visible sealants, prior treatments and debris. Prime existing PVDF (Pvf2) coatings with suitable bonding primer. Solvent wipe / key newly installed sheet & rooflight surfaces before coating.

Flashings: Replace or overlay existing with wider panels. Install new infills, positioned to avoid damage & secure top and bottom with DriSilane® RS. Seal fixings as described.

Fixings: Remove non-moulded fixing caps, degraded washers and loose fixing head corrosion. Re-tighten, or replace with new approved, all loose or missing fixings. Apply one coat of DriSilane® Prime to corroded heads. Encapsulate & fully surface seal with DriSilane® RS. Surface seal around red cap rooflight fixings with DriSilane® RS

Sheet corrosion (surface & cut edge)

Prepare substrate to St3 standard of EN ISO 8501-1:2007. Do not polish. Feather edge firmly adhered adjacent coating. Remove all swarf arising.

Apply one coat of DriSilane® Prime to correct thickness to all exposed prepared steel, overlapping adjacent, feathered coating by at least 10 mm.

Sheet end-lap (roof sheet, flashing & rooflights)

Seal end laps with DriSilane® RS and tool with DriSilane® Flex to obscure the lap edge, applied to both sides of the lap in a continuous uniform band that overlaps installed DriSilane® Prime by at least 10 mm.

Seal rooflight ends & laps with DriSilane® RS tooled with Flex in a continuous uniform band of minimum 75 mm width.

Sheet side-lap (including rooflights)

Seal ridge to eave with an even bead of DriSilane® RS. Tool with DriSilane® Flex to ensure full surface contact.

Profiled Metal Roof Sheet

On completion of above stages, apply one coat of DriSilane® Elite to a min wet film thickness (WFT) of 300 µm.

Application Notes (see also Product Data)

Remove excess surface water. Protect tins from moisture. Contact DriSilane if corrosion extends beyond main fixing. Do not apply if surface temperature is above +40°C, if heavy rain is imminent or overnight frost / snow is expected.